

October 2018 | Vol 5 | Issue 54 | ₹200

DESIGN detail

the architecture magazine



**EXONENT OF
SIMPLICITY**
AR. PALINDA KANNANGARA

**IN THE
LUMINOUS VALLEY**
MVRDV

INTERIOR SPECIAL

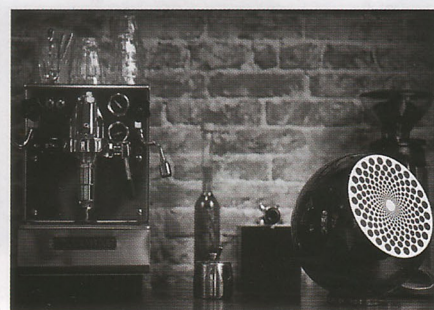
**THE RUSTIC ELEGANCE
OF TERRACOTTA**
THE GRID ARCHITECTS

ZEMi Aria speakers

Give your designs the perfect touch in the bath, vanity or closet areas with Häfele's New Aquasys Light Mirror. Beautifully designed, the mirror adds value, functionality and style to any interior space.

The versatile mirror comes fully assembled and unites the functions of make-up lighting, room lighting, mood lighting, demister (prevents condensation on the mirror during and after a shower) and sound system in an elegant design.

The front light, in natural and warm white, equipped with a memory function offers excellent colour trueness that exceeds the market colour rendering indexes making it very suitable as a make-up light. All functions are



controlled via touch keys that are integrated into the mirror.

The easy-to-install, IP44-rated mirror comes fully-assembled with a mounting track for installation. With the option to rotate the mirror by 90 degrees, it's the perfect fit for any interior décor or style.

Price: Rs. 70,000/-

SPECIFICATIONS

- Apple AirPlay and Bluetooth-Cambridge Silicon Radio 10 Mbit/sec - SBC (to multiple devices via Apple AirPlay)
- Analogue and optical digital input (24-bit, 96 kHz)
- Three powerful amplifiers 125W
- Patented bass optimization
- Premium 2.1 single stereo driver set
- Carbon composite woofer, 157 mm fiberglass cone
- Two silk dome tweeters, 28 mm fiberglass dome neodymium
- Premium Digital-Analogue-Converter (DAC)
- Rigid low-resonance casing
- Frequency Response - 45 Hz to 20 kHz \pm 3 dB
- Output - 105 dB @ 150 Hz to 18 kHz
- Wave emission- Multi-directional technology

For more info: media@anushagroup.com / www.anushagroup.com